

Alpha 5 – QODBC - Quickbooks

Or I can do What with What?

Giving you the right combination to Unlock the Knowledge



ATEC 2007

Al Buchholz
Bookwood Systems, LTD



ATEC 2007

Unlock the Knowledge

Alpha 5 – QODBC - Quickbooks

Basic Structure – Technical Information

- Alpha 5
- QODBC
- Quickbooks
- Marketing – Developers Tool Showcase
 - QReportbuilder
- Alpha 5 features –
 - We'll see examples as they apply to QB
 - Other talks deal with A5 details



ATEC 2007

Unlock the Knowledge

Alpha 5 – QODBC – Quickbooks Components

- Quickbook table structures
- Alpha DAO - today
 - Passive-linked tables
 - Alpha DAO import
 - Alpha DAO action scripting
 - A5 AS connections
- QODBC SP reports
- Xdialog



ATEC 2007

Unlock the Knowledge

Quickbook table structures

- Detailed in 2005 Conference talk
 - www.bookwood.com Learning Center
- On the QODBC.com website
 - Product info, downloads, documentation, support forum
- Available with the Quickbooks SDK
 - Good information –
 - not a required component

Connecting 1st time to QB

ATEC 2007

Unlock the Knowledge



QB Preferences

ATEC 2007

Unlock the Knowledge

Preferences

Type a help question **Ask** **How Do I?**

My Preferences **Company Preferences**

You can manage all applications that interact with this QuickBooks company file here.

Don't allow any applications to access this company file

Notify the user before running any application whose certificate has expired

Applications that have previously requested access to this company file

Allow Acc...	Application Name
<input checked="" type="checkbox"/>	FLEXquarters QODBC

Properties...
Remove

To learn more about applications that integrate with QuickBooks, go to the [QuickBooks Solutions Marketplace](#)

OK
Cancel
Help
Default

Also See:
General
Service Connection



Quickbook table structures – Major Points

ATEC 2007

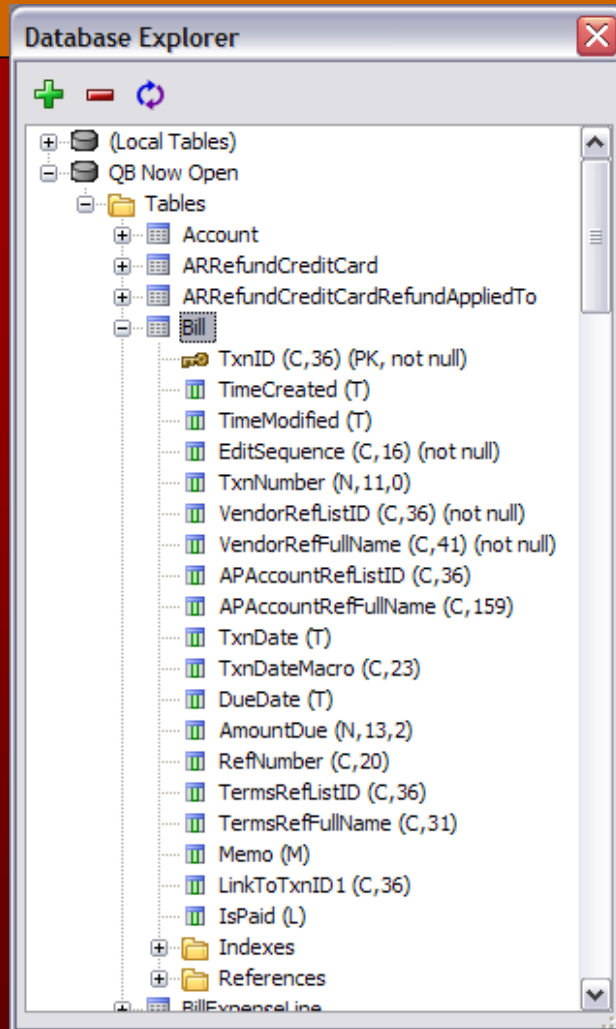
Unlock the Knowledge

- List tables
- Transaction Tables
 - Can be single or composite tables
- ID fields
- Jumpins (indices)
- Relationships between tables (linkages)
- QODBC.com support forum
- A5 database explorer

A5 Database Explorer

ATEC 2007

Unlock the Knowledge





ATEC 2007

Unlock the Knowledge

Alpha DAO

- Alpha 5 v 7 or 8 Enterprise required
- Consists of:
 - Alpha DAO Import
 - Alpha DAO Action Scripting
 - Passive-linked Tables
 - <SQL Data Source > reports
 - Alpha 5 Application Server connections



ATEC 2007

Unlock the Knowledge

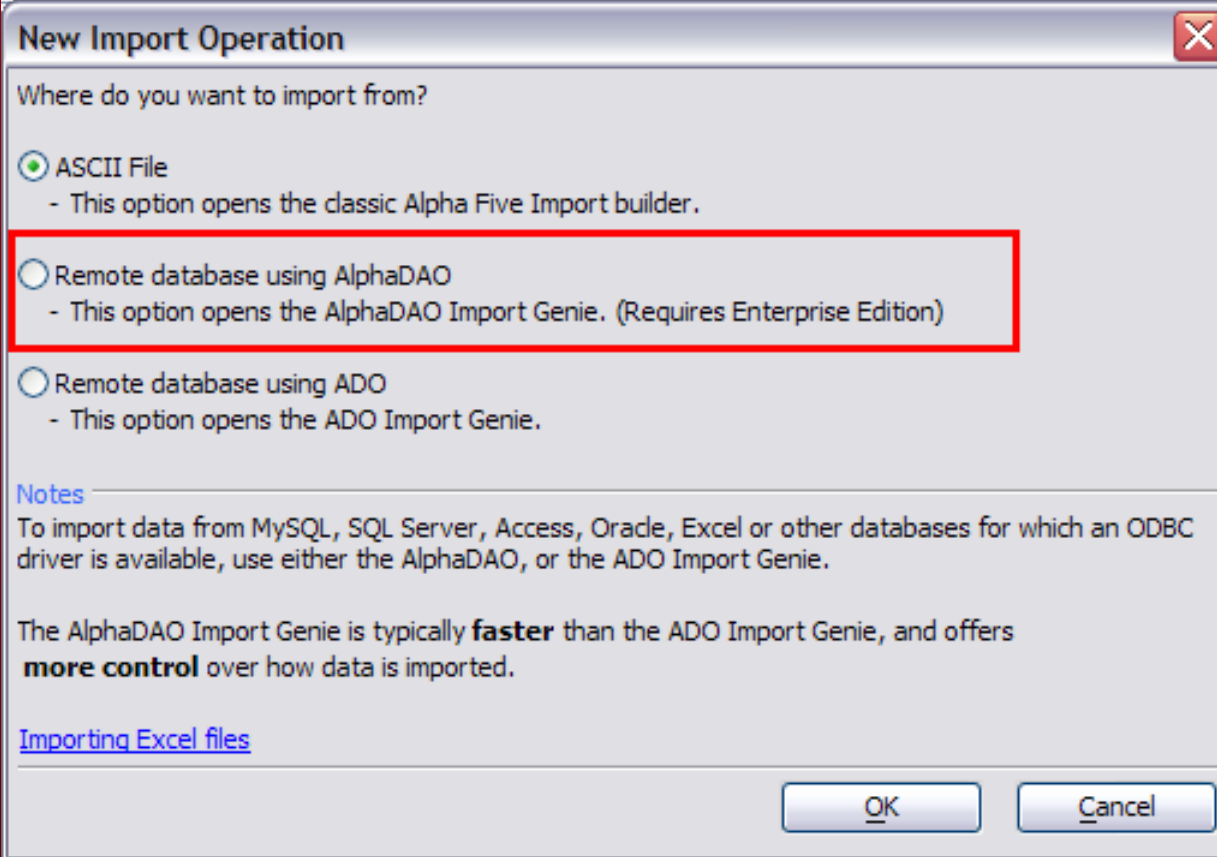
Alpha DAO Import

- Upscale from ADO Import
- Important options
 - Arguments for filtering
 - Over-ride output field definitions
 - Performance improved

Alpha DAO Import

ATEC 2007

Unlock the Knowledge



New Import Operation

Where do you want to import from?

ASCII File
- This option opens the classic Alpha Five Import builder.

Remote database using AlphaDAO
- This option opens the AlphaDAO Import Genie. (Requires Enterprise Edition)

Remote database using ADO
- This option opens the ADO Import Genie.

[Notes](#)

To import data from MySQL, SQL Server, Access, Oracle, Excel or other databases for which an ODBC driver is available, use either the AlphaDAO, or the ADO Import Genie.

The AlphaDAO Import Genie is typically **faster** than the ADO Import Genie, and offers **more control** over how data is imported.

[Importing Excel files](#)

OK Cancel



Alpha DAO Action Scripting

ATEC 2007

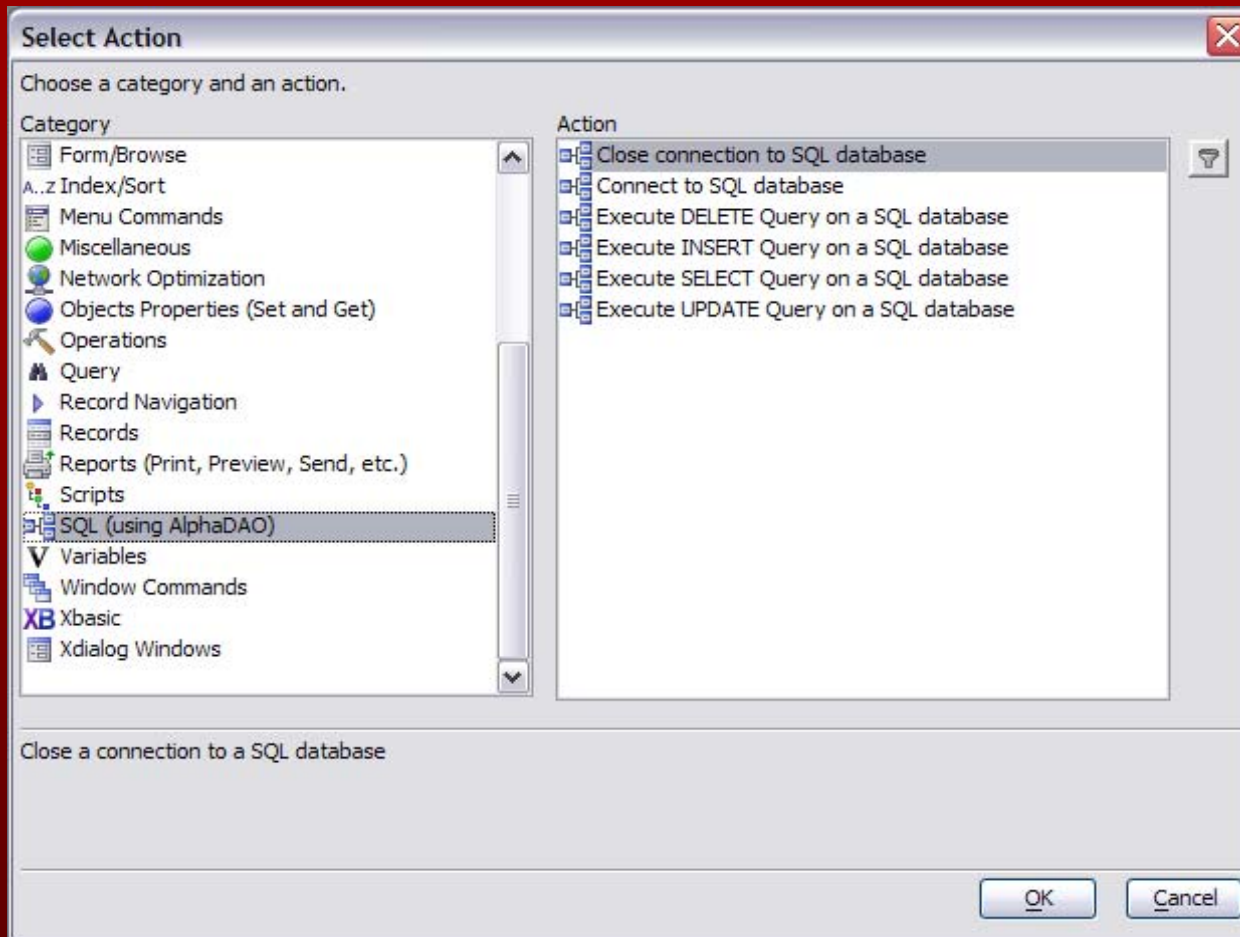
Unlock the Knowledge

- Starting place
- Use like other action scripting
 - Generate
 - Modify
 - Convert to a function

Alpha DAO Action Scripting

ATEC 2007

Unlock the Knowledge





ATEC 2007

Unlock the Knowledge

Passive-linked Tables

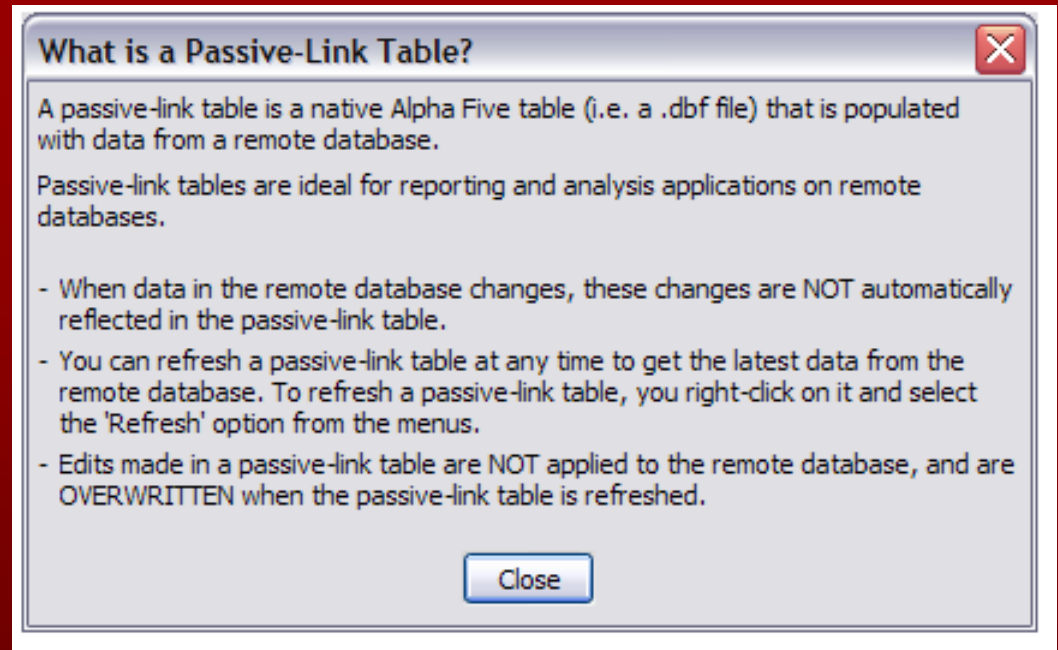
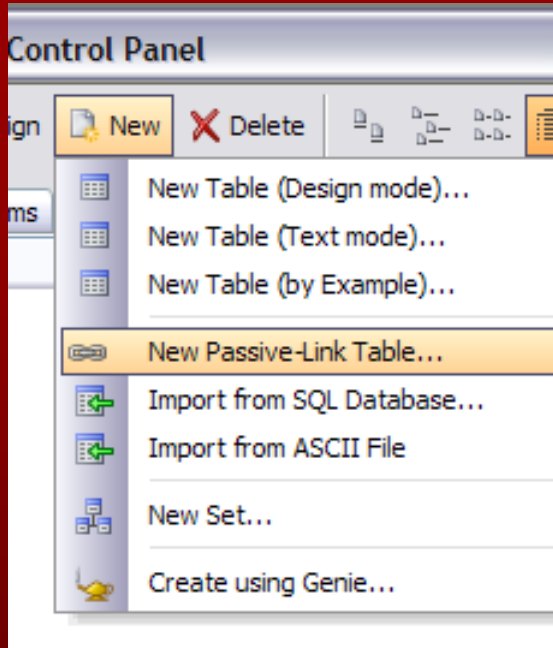
- Fundamentally an import
- Easy to use and refresh
- Designed for producing reports
- Leaves the data in a dbf
- Think of it like a cursor or temporary table
- Can be used to feed data to another table



ATEC 2007

Unlock the Knowledge

Passive-linked Tables





<SQL Data Source> reports

ATEC 2007

Unlock the Knowledge

- Directly read data from SQL Data Source (ie: QB)
- New concept
 - Not based on a dbf
 - Not independent like Xdialog



ATEC 2007

Unlock the Knowledge

A5 AS connections

- Select Alpha DAO datasource
- Connection string
- Query – Table or ReportSP
- Direct read/write to SQL tables
 - But - QB valid entry only
 - A5 can write to QB fields just like a user can write to QB fields in the QB program



ATEC 2007

Unlock the Knowledge

QODBC SP reports

- Server-side processed reports
- Results send to client as a table
- Or input to a <SQL Data Source> based report
- Can combine with other tables via sets
- Or via A5 functions – ie lookups



ATEC 2007

Unlock the Knowledge

What are the choices?

- Read from QB tables
 - Passive-linked Tables
 - DAO Import
 - <SQL Data Source>
- Read/Write to QB tables
 - DAO Action Scripting
 - Application Server
 - Xdialog



ATEC 2007

Unlock the Knowledge

Additional Thoughts

- VB test query program
- Security within Quickbooks
- Performance helps
 - Keep QB open – at least in most versions
- Import – append/update – deletes
 - Copy/append operations
 - Deletes – mark inactive/change flag – not an actual delete
- QB indices



ATEC 2007

Unlock the Knowledge

Writing to QB

- Start Simple
 - Read account(s)
 - Change an account
 - Mark the account inactive
 - Add an account
- Toughen it up..
 - Read invoices
 - Write invoices back



ATEC 2007

Unlock the Knowledge

Alphasports with QB

- Copy Alphasports to a fresh directory
- Add listid to needed tables
- Use passive linked tables to import QB tables
- Add append/update operations
- Add new sets
- Use <SQL Data Source> reports/xdialog listview for immediate access
- Connect via A5 AS server



Fields to add

```
Dim FieldsToAdd as C

FieldsToAdd=<<{%fta%
ListId,C,36
{%fta%

a5_add_fields_to_table("customer",FieldsToAdd)

a5_add_fields_to_table("invoice_header",FieldsToAdd)

a5_add_fields_to_table("product",FieldsToAdd)

a5_add_fields_to_table("vendor",FieldsToAdd)
```

- Determine additional fields that you want
 - New table using text mode to combine tables



ATEC 2007

Unlock the Knowledge

Passive-linked – multiple tables

- Unless you want to limit the number of fields imported
- Prefix with QB or QB_ (or your choice)



A5 – QODBC – Quickbooks Finally

ATEC 2007

Unlock the Knowledge

Hear what the client is asking for

Then figure out what they really mean

Start simple

Model an initial prototype

Work into the final solution